



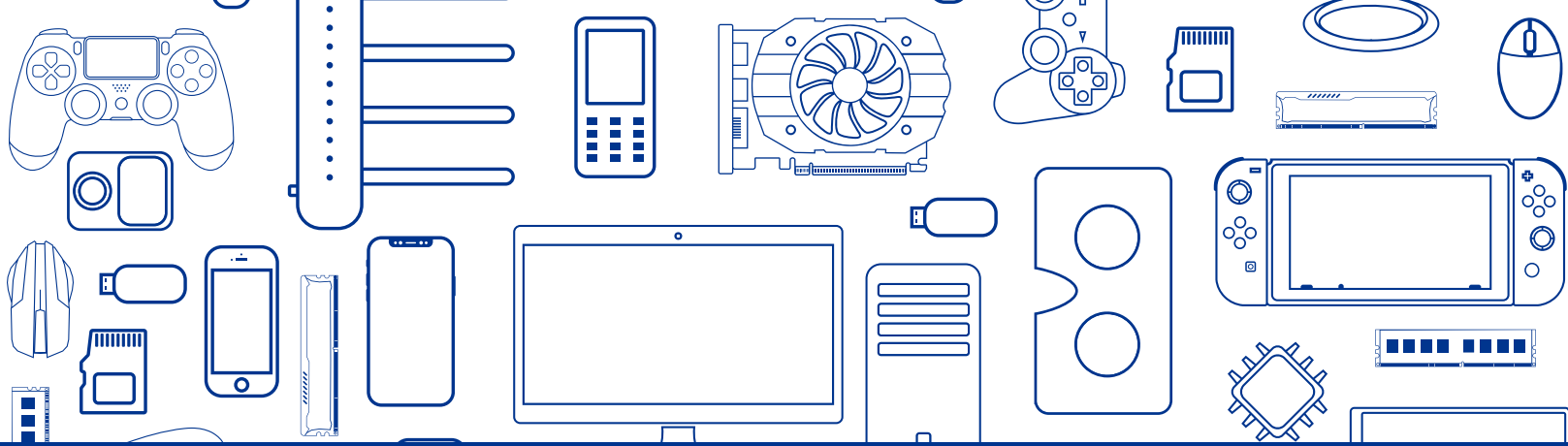
Electronic Waste Disposal

Electronic waste (e-waste) needs special care and isn't collected at the curb.

- Unwanted electronics should never end up in the landfill or in your garbage bag. Most of the parts - steel, glass, copper, aluminum, plastics and precious metals - can be recovered and made into new products.
- Electronic equipment such as computers, printers, and televisions can be reused, further cutting down on waste. If in working condition, please consider donating your used electronics.
- Please remember to remove personal information from devices prior to disposal.

Acceptable e-waste

- Audio recording equipment
- Cameras, including security cameras
- Computers
- Display devices
- Drones with audio or visual recording equipment
- Handheld point-of-sale terminals or devices
- Headphones
- Musical instruments
- Parts of information technology, telecommunications and audio visual equipment sold separately, such as hard drives peripherals and cables used to support the function of information technology, telecommunications and audio visual equipment, including charging equipment
- Printers (desktop and floor-standing)
- Radios and stereos, including after-market vehicle stereos
- Speakers
- Telephones, including cellular phones
- Video gaming consoles
- Video recorders



Electronic Waste Disposal

Unacceptable e-waste

- ITT/AV equipment weighing more than 250kg
- Children's toys
- Motor vehicles
- Power tools
- Small and large appliances

Drop-off Locations

Baxter Transfer Station
980 South Bay Rd.,
Port Severn

Rosewarne Transfer Station
1062 Rosewarne Dr.,
Bracebridge

Beiers Transfer Station
1052 Beiers Rd.,
Gravenhurst

Stisted Transfer Station
178 Stisted Landfill Rd.,
Huntsville

Eveleigh Transfer Station
1174 Eveleigh Rd.,
Port Carling

Franklin Transfer Station
1020 Oxtongue Rapids Rd.,
Dwight

